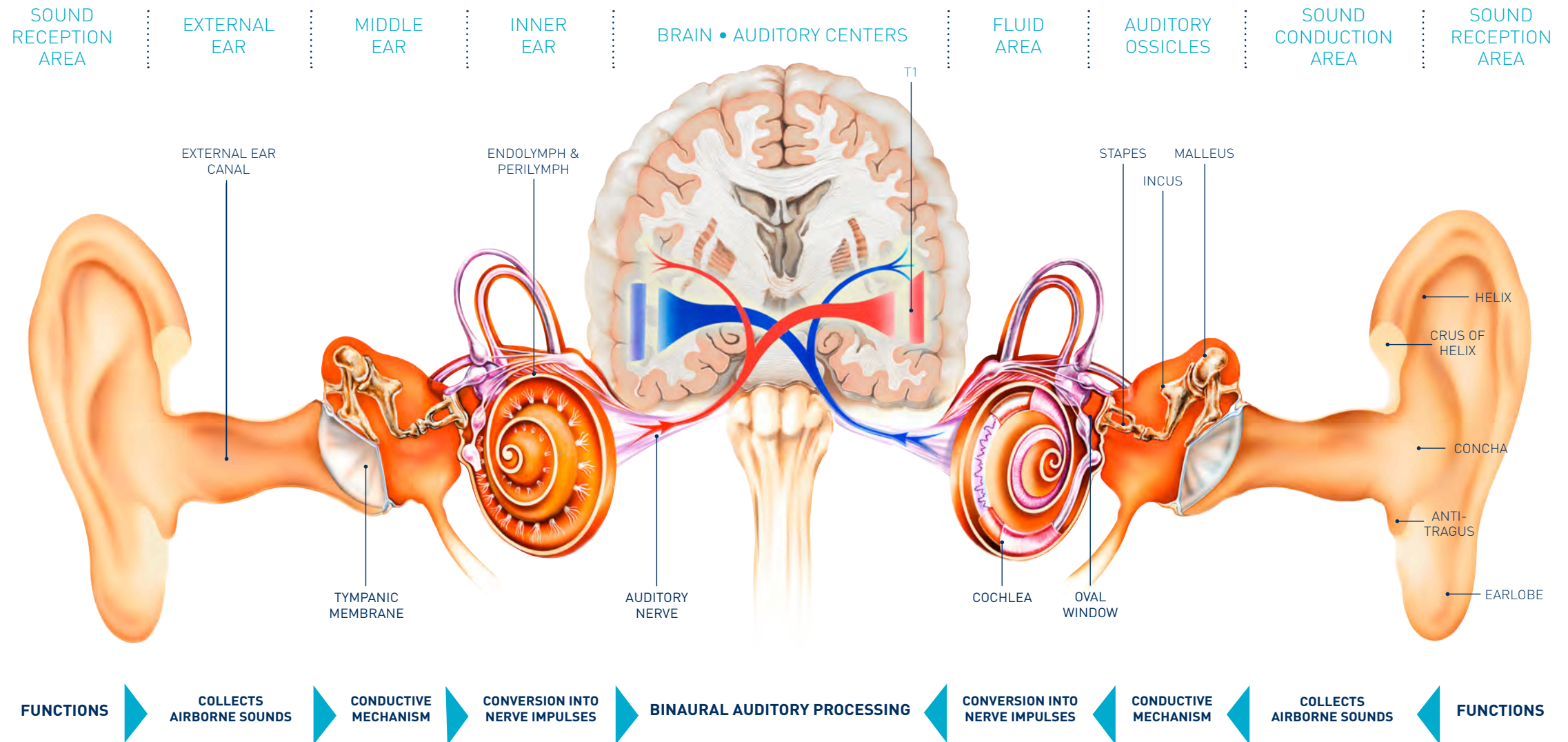


# The Anatomy of Binaural Hearing



## Symptoms of Hearing Loss:

- > Asking people to repeat themselves
- > Strained personal relationships
- > Misunderstanding conversations
- > Social withdrawal
- > Fatigue and stress
- > Difficulty understanding women's and children's voices
- > Turning up the volume on the TV

## Leading Causes of Hearing Loss:

### Children

#### *Middle Ear Problems*

- > Before age six, 90% of children will suffer from ear infections

#### *Birth/Genetic Irregularities*

- > Family history of hearing loss
- > Congenital infections

### Adults

- > Excessive noise exposure
- > Aging process
- > Heredity
- > Vascular and circulatory disorders
- > Tumors and other space occupying lesions

### Other

- > Bacterial meningitis
- > Head trauma
- > Ototoxic medications
- > Childhood infectious diseases (mumps, measles)